



CELESTE

KICK-OFF Meeting

Galileo cooperation Project for Latin America

Galileo Joint Undertaking

São José dos Campos, 9th-10th March
2006

Kick-Off Meeting - Agenda

Day 9

09:00 – 09:30	Introduction
09:30 – 10:30	CELESTE: Description, Objectives and Management (AENA)
10:30 – 11:30	Activity A: Description, Objectives and Management (ALCATEL)
11:30 – 12:00	Coffee break.
12:00 – 13:00	Activity B: Description, Objectives and Management (ATECH)
13:00 – 14:00	Lunch Break
14:00 – 15:00	Contractual Aspects
15:00 – 16:00	Project aspects: Calendar, Coordination, Meetings Schedule.
16:00 – 16:30	AOB

CELESTE - Galileo cooperation Project for Latin America

Kick-Off Meeting - Agenda

Day 10

09:00 – 09:20	Introduction
09:20 – 09:40	WP 2100 presentation (GMV/INDRA SI)
09:40 – 10:00	WP 2210 Presentation (GMV)
10:00 – 10:20	WP 2220 Presentation (AENA)
10:20 – 10:40	WP 2230 Presentation (ATECH)
10:40 – 11:00	Coffe break
11:00 – 11:20	WP 2310 Presentation (ATECH, GMV, INDRA SI)
11:20 – 11:40	WP 2320 Presentation (GMV)
11:40 – 12:00	WP 2330 Presentation (BCI)
12:00 – 12:15	WP 3110 Presentation (AENA)
12:15 – 12:30	WP 3120 Presentation (INECO DB)
12:30 – 12:45	WP 3130 Presentation (GMV)
12:45 – 13:00	WP 3140 Presentation (INDRA SI)
13:00 – 13:15	WP 3150 Presentation (ATECH)
13:15 – 14:30	Lunch
14:30 – 14:45	WP 3210 Presentation (HISPAMAR)
14:45 – 15:00	WP3221 Presentation (INECO DB)
15:00 – 15:30	WP 3222 Presentation (INECO DB)
15:30 – 15:45	WP 3223 Presentation (GMV)
15:45 – 16:00	WP 3224 Presentation (INDRA SI)
16:00 – 16:15	WP 3225 Presentation (ATECH)
16:15 – 16:30	WP 3230 Presentation (ATECH)
16:30 - 16:45	WP 3240 Presentation (BCI/ATECH)
16:45 – 17:00	WP 3250 Presentation (ALCATEL/ATECH)
17:00 – 17:15	General discussion.
17:15 – 17:45	AOB and closure.

CELESTE Project overview

- The introduction of Galileo in the region has to be based on a long-term co-operation with the main parties of Latin America.
- The aim of **CELESTE** Project is to foster the co-operation within Latin America, to provide the guidelines and recommendations to define future activities and projects to be carried out in the region, increasing the awareness level on Galileo in Latin America, as well as to boost the GNSS applications market in the area to support the GNSS Regional Plans.

CELESTE Project overview

This project focuses on two activities:

- Support to Regional Plan
- Galileo Services Introduction

CELESTE Project overview

The **Support to Regional Plan** activity will be focused on the identification, definition, trade-off and detailed analysis of Galileo integrity scenarios, based on both Galileo ERIS concept and SBAS concept.

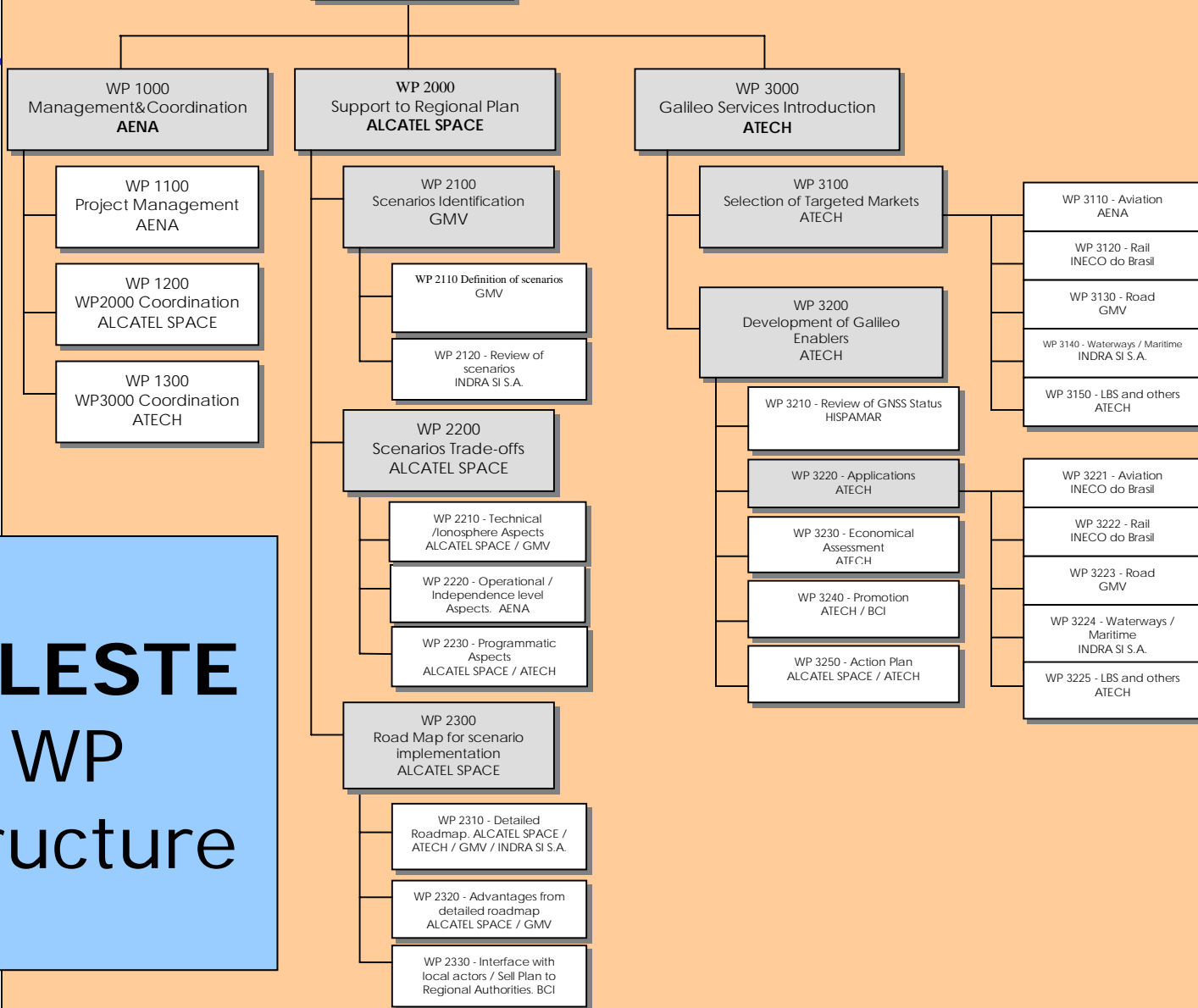
CELESTE Project overview

The aim of the **Galileo Services Introduction** activity is the analysis of the necessary steps for the migration of the current GPS based GNSS applications, to a Galileo and SBAS based.

CELESTE Project overview

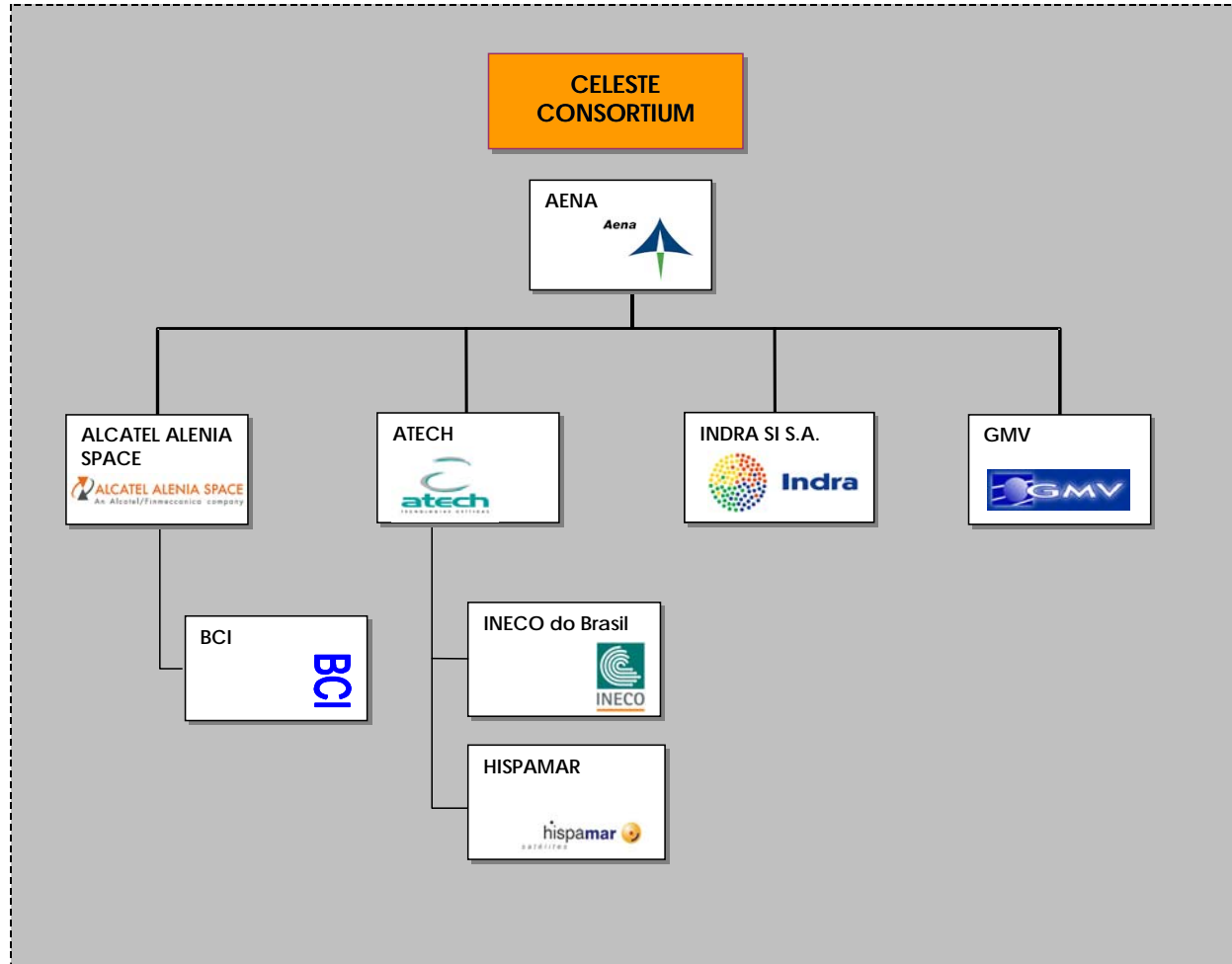
The results will be disseminated and will be used to provide the elements to support the strategy definition of the **Galileo Information Centre** for Latin America (GIC).

**CELESTE
PROJECT**

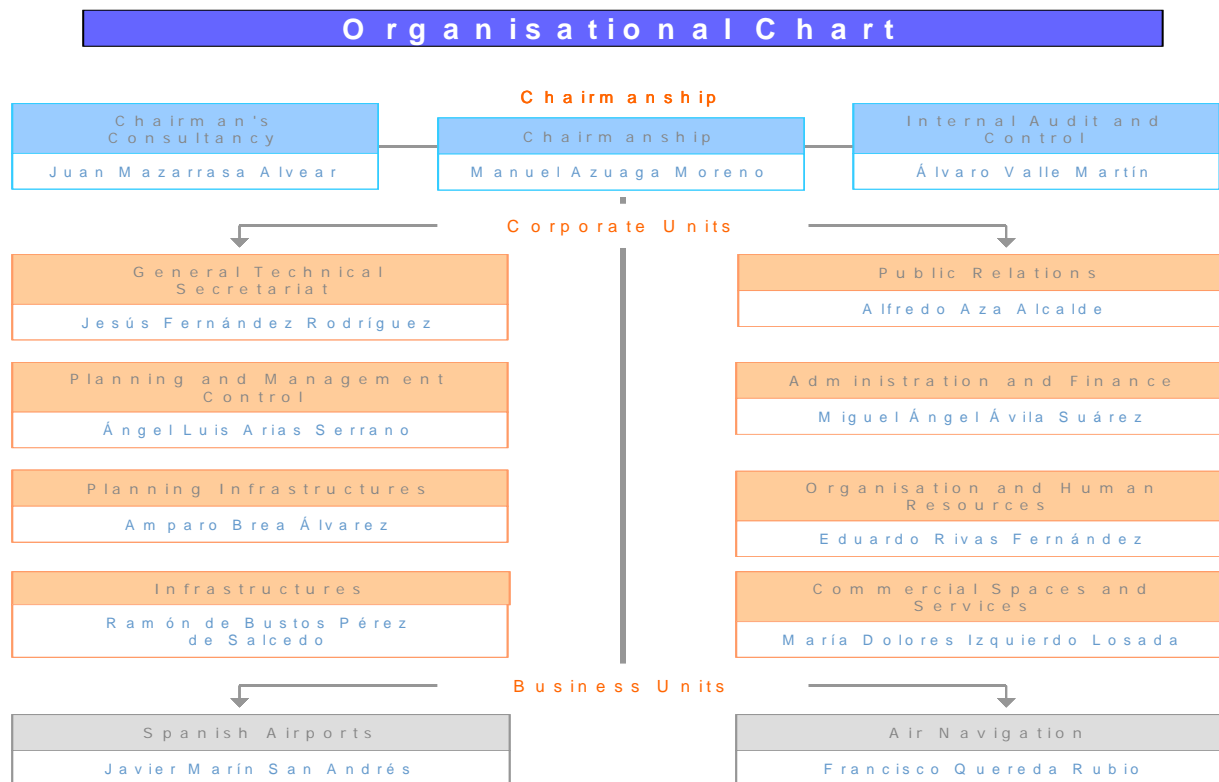


**CELESTE
WP
Structure**

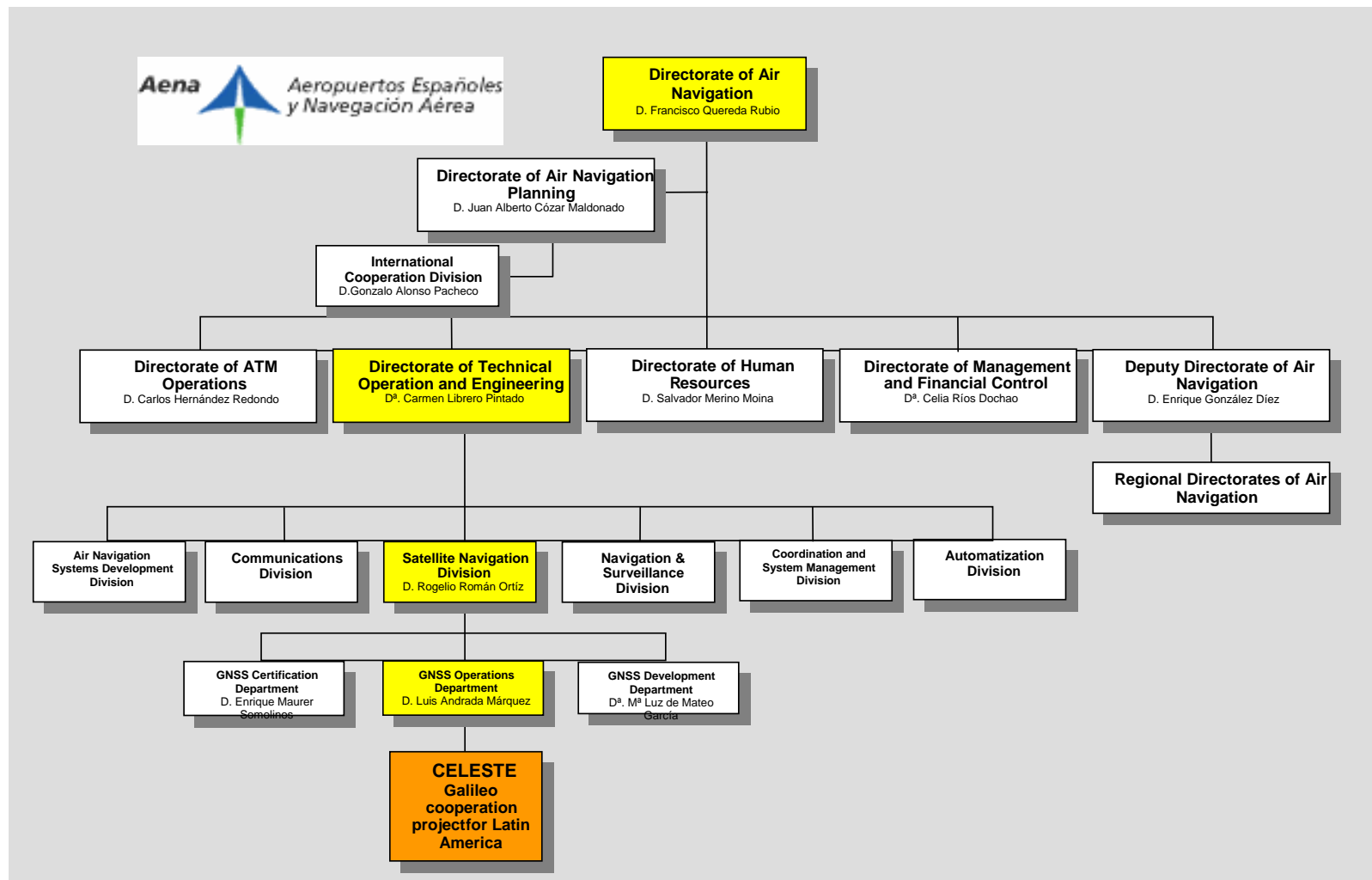
CELESTE Consortium presentation



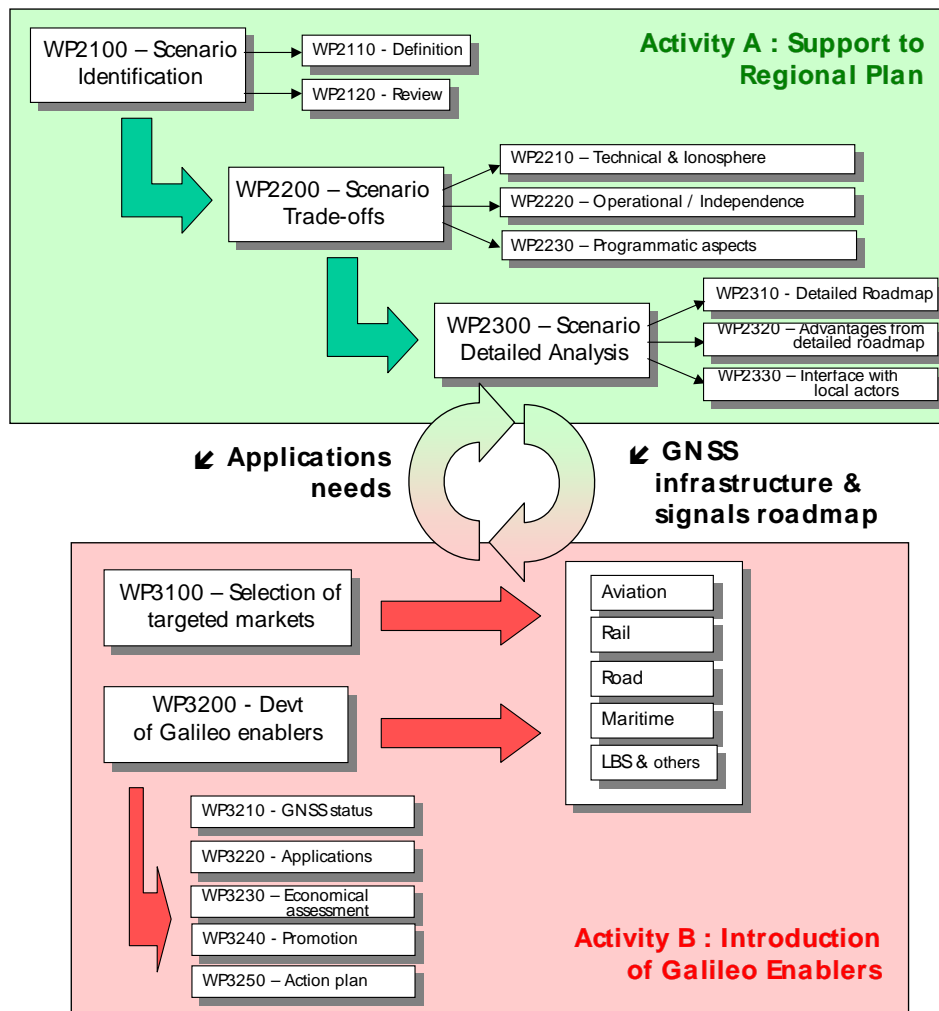
AENA organizacional chart



AENA Air Navigation Directorate



Technical Presentation – Overall logic



Project meetings

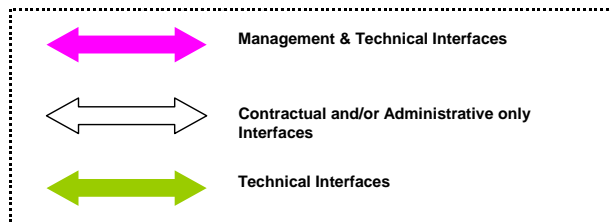
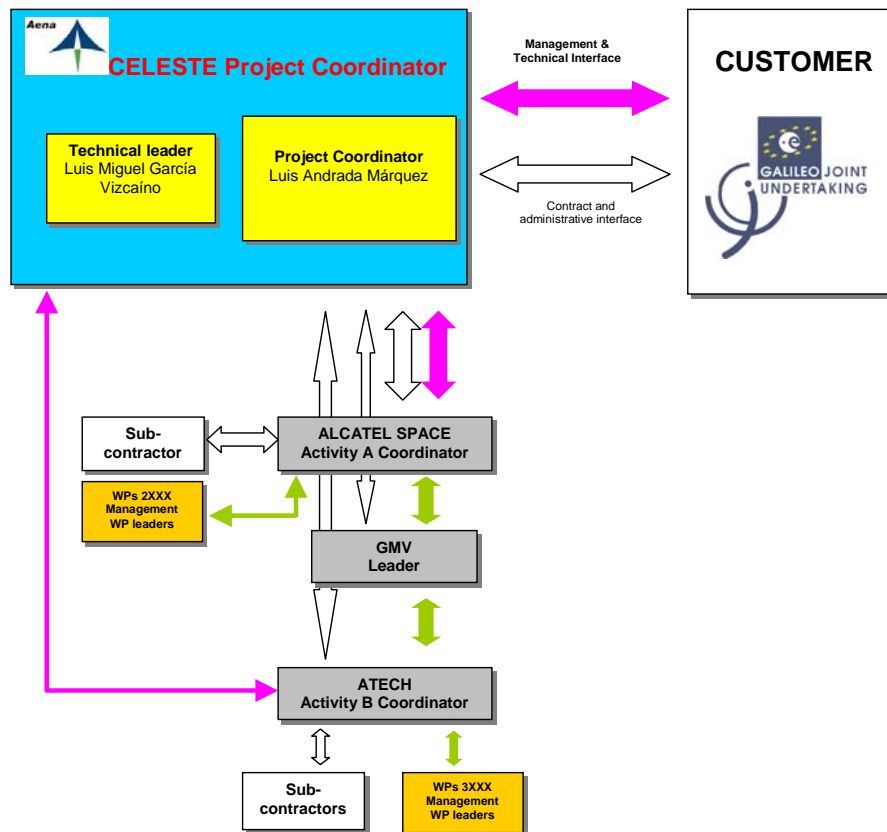
- **Kick-off meeting.** To be held at the GIC in Sao José Dos Campos, Brazil.
- **Teleconference 1 Progress Meeting.** It is proposed to hold a teleconference at **To+2**, to review the status of the project activities.
- **Progress Meeting at AENA's premises** in Madrid, **after To+3**, to present the draft version of the Scenarios Identification and for the Selection of Targeted Markets Final Review.
- **Mid Term Review Meeting** at **To+6**. It will be considered as Review and Progress Meeting and it will be held at AENA's premises in Madrid.
- **Teleconference 2 Progress Meeting** at around **To+9**, to review the work performed since the MR.
- **Final Meeting Review** at **To+12** shall also take place at the GIC in Sao José Dos Campos, Brazil.

Project Management & coordination

Four main coordination interfaces required for CELESTE project;

1. Between consortium companies from different continents (time difference between Latin America and Europe)
2. Project Coordination interface with the customer, Galileo Joint Undertaking.
3. Coordination interface with GIC contractor (GJU 4081 Project), with GJU management.
4. Coordination with other existing studies, e.g. GEM.

Coordination interface with the customer, GJU



Coordination interface with the GJU(cont)

- All the project activities defined in the Work Packages will be managed by AENA's Project Manager and coordinator through the higher level WPs coordinators, ALCATEL ALENIA SPACE and ATECH.
- The **Project Management Plan** shall define the Project organisation, Project control and monitoring, Project planning, Documentation management and Cost management.
- WPs 2XXX (**activity A**) will be **technically** coordinated by ALCATEL ALENIA SPACE and WPs 3XXX (**activity B**) by ATECH.

Coordination with GIC

- GJU requirement to coordinate with the GIC for publishing and dissemination of the results of the project activities, for any public relation activity and for participating in seminars/workshops.
- A detailed procedure for the coordination with the GIC would be defined and agreed with the GJU.
- More GJU inputs needed to define the CELESTE-GIC interface.
- ALL documents will be delivered only to GJU, not to GIC.

Coordination with other existing studies

Support to Regional Plan activity

- Need to coordinate with GEM project where the regional integrity concept and the comparisons of SBAS and Galileo are being analyzed.
- Input information (GEM, INTEG,...) from GJU about the existing related studies and developments carried out in Europe and studies to define the architecture of the regional system in Latin America.

Galileo Services Introduction

- Input information from GJU about existing and future related studies and developments carried out in Europe.

Coordination with GIC and other existing studies

PROPOSED COORDINATION DIAGRAM

